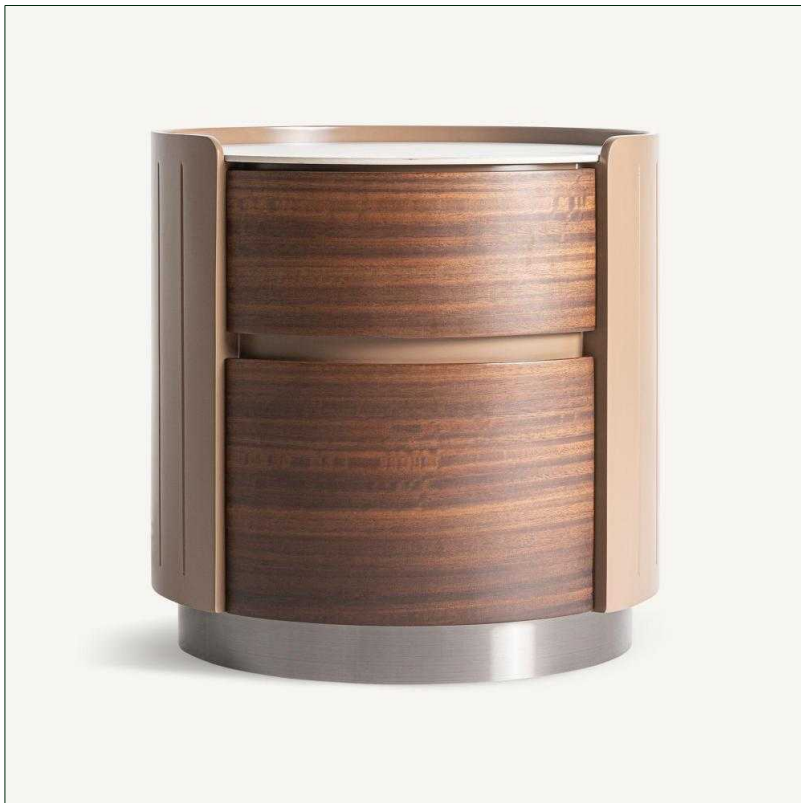


# VICAL

Ref. 35279 GISWIL BEDSIDE TABLE



## COMPOSITION

Plywood in brown, combined with light brown eucalyptus veneer and white sintered stone

## DIMENSIONS

Measurements (length x width x height):  
48 x 47 x 49 cm.

Weight:  
21,5 kg.

Number of drawers:  
2

Interior drawers:  
26X32X7 cm.

Legs dimensions:  
43.5X43.5X6 cm.

Edge table to leg:  
2.5 cm.

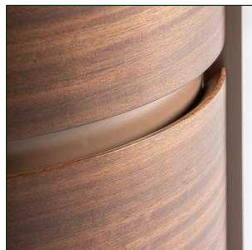
Board thickness:  
0.6 cm.

Type of legs:  
Fija

Supported Weight:  
40 kg.

## Cleaning instructions:

Clean daily with a synthetic cloth. Clean with mix of cold water and mild soap. Dry with a cotton cloth. If wood is varnished you can add a small spoon of vinager to the mix in order to recover its brightness.



| Packaging | Type   | Units/Box | Content | Volume | Length | Wide | High | Weigth (Kg) |
|-----------|--------|-----------|---------|--------|--------|------|------|-------------|
|           | CARTON | 1         | PRODUCT | 0.1663 | 54     | 55   | 57   | 23,5        |