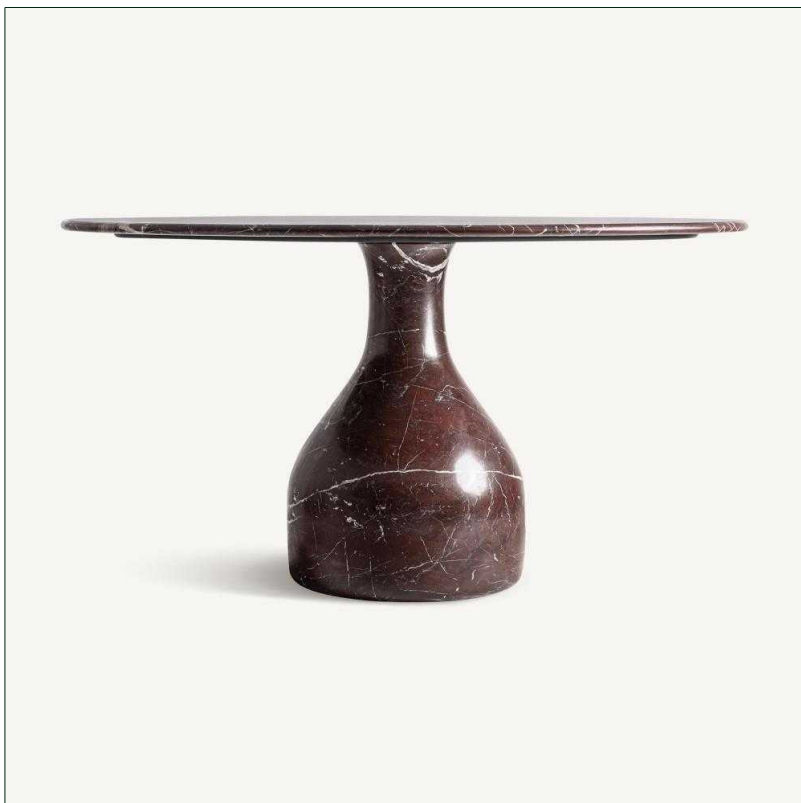


# VICAL

## Ref. 37378 BOURG DINING TABLE



### COMPOSITION

Marble in burgundy with a bright finish

### DIMENSIONS

Measurements (length x width x height):  
140 x 140 x 75 cm.

Weight:  
335,0 kg.

Legs dimensions:  
44 cm.

Edge table to leg:  
48 cm.

Board thickness:  
2 cm.

Type of legs:  
Fija

Detachable parts:  
board

Number of diners:  
6

Supported Weight:  
15 kg.

product.

### Cleaning instructions:

Clean gently with a damp cloth and a neutral, stone-specific soap, and dry immediately to prevent stains. We recommend promptly wiping up liquid spills that could cause permanent staining, and also advise against using acidic products on marble (such as vinegar or acidic disinfectants) due to the porous nature of the material.

Packaging	Type	Units/Box	Content	Volume	Length	Wide	High	Weigth (Kg)
	CARTON	1		0.4802	70	70	98	145,0
	CARTON	1	PRODUCT	0.6864	1.60	26	1.65	240,0